

■ POWER LIFTGATE (PLG) BUZZER REMOVAL/INSTALLATION

id091100804200

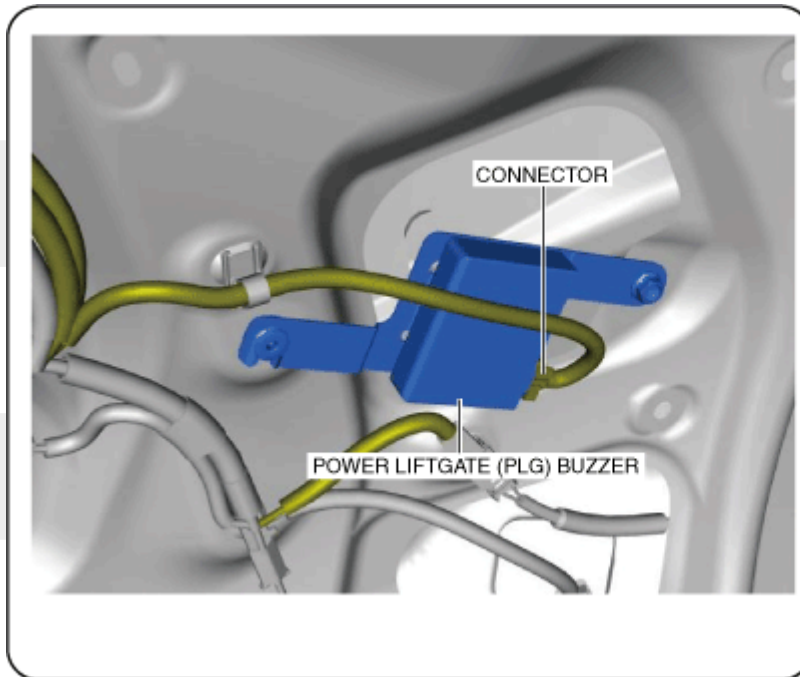
id091100804200

1. Disconnect the negative battery terminal. (See NEGATIVE BATTERY TERMINAL DISCONNECTION/CONNECTION.)

2. Remove the following parts:

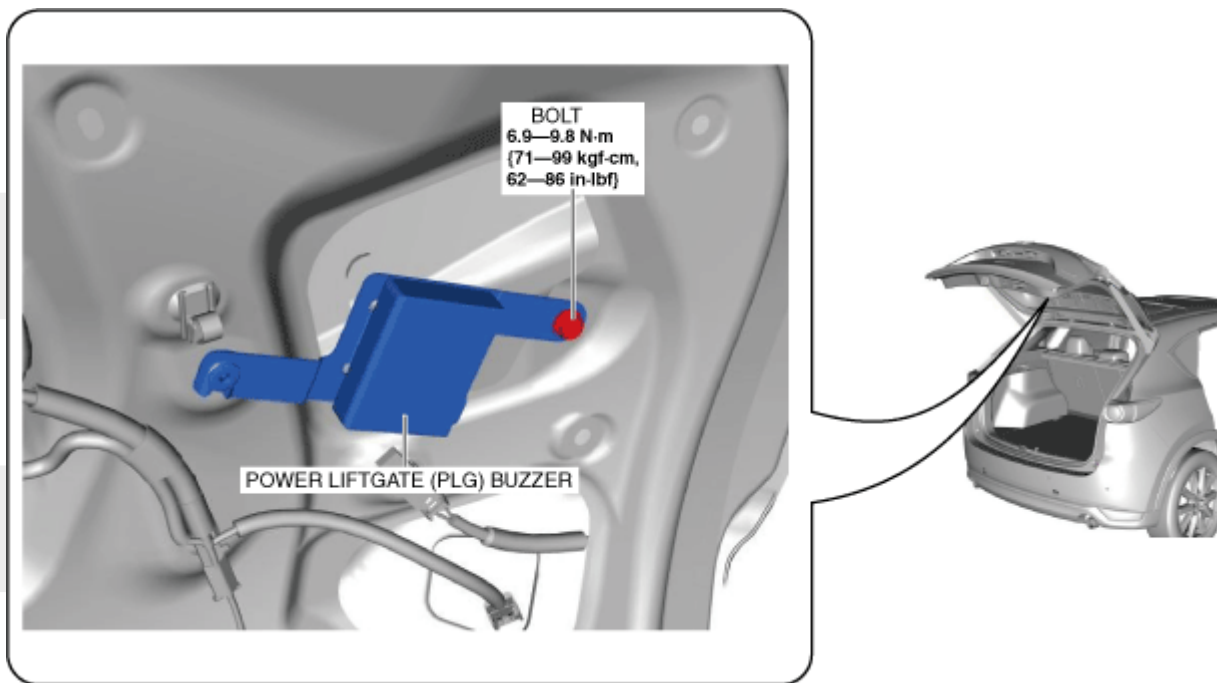
(1) Liftgate upper trim (See LIFTGATE UPPER TRIM REMOVAL/INSTALLATION.) (2) Liftgate side trim (See LIFTGATE SIDE TRIM REMOVAL/INSTALLATION.) (3) Liftgate recess (See LIFTGATE RECESS REMOVAL/INSTALLATION.) (4) Power liftgate (PLG) rear switch (See POWER LIFTGATE (PLG) REAR SWITCH REMOVAL/INSTALLATION.) (5) Liftgate lower trim (See LIFTGATE LOWER TRIM REMOVAL/INSTALLATION.)

3. Disconnect the connector.



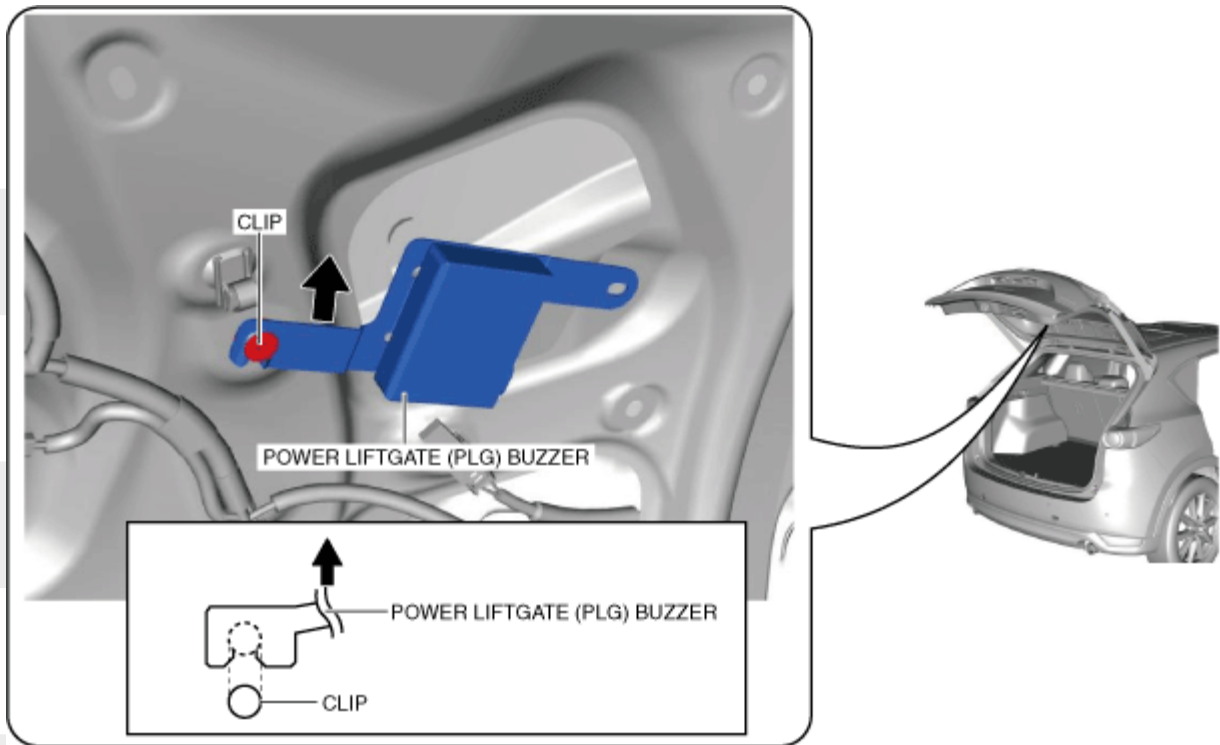
ac5uuw00006152

4. Remove the bolt.



ac5uuw00006153

5. Move the power liftgate (PLG) buzzer in the direction of the arrow shown in the figure and detach the power liftgate (PLG) buzzer from the clip.



ac5uuw00006154

6. Install in the reverse order of removal.