

Service Information

Mazda Motor Corporation

3-1, Shinchi, Fuchu-cho, Aki-gun
Hiroshima 730-8670, Japan
TEL : 81(82)287-5323
FAX : 81(82)287-5220

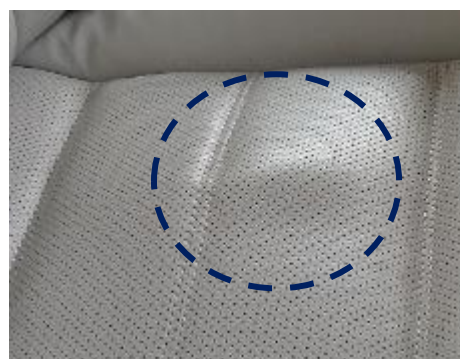
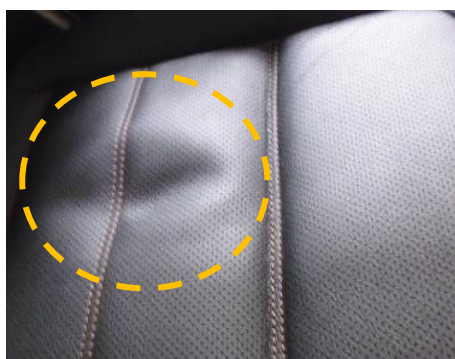


Category S	Repair Guidance	Ref. No. R054/18	Page 1 of 2
Coverage <input type="checkbox"/> Distributor only <input checked="" type="checkbox"/> Please inform your dealers		Date Issued September 12, 2018	
Please convey this information to your <input type="checkbox"/> Director <input checked="" type="checkbox"/> General Manager <input checked="" type="checkbox"/> Warranty Dept. <input checked="" type="checkbox"/> Parts Dept. <input checked="" type="checkbox"/> Training Dept. <input checked="" type="checkbox"/> Field Rep.		Date Revised	
Applicable Model CX-5 (KF) with Leather Seat		Applicable Countries and/or Vehicle Specifications Worldwide	

Subject: Warping Surface of Driver's Seat

DESCRIPTION

Some vehicles may exhibit a warping surface of the driver's seat cushion, which causes poor appearance.



CAUSE

Gap occurs between the leather surface and the cushion pad due to insufficient surface tension of the seat trim.

MASS PRODUCTION CHANGE

A non-woven fabric is attached to the backside of the front seat cushion trim to enhance the surface tension.

SUBJECT VIN & PRODUCTION DATE RANGE

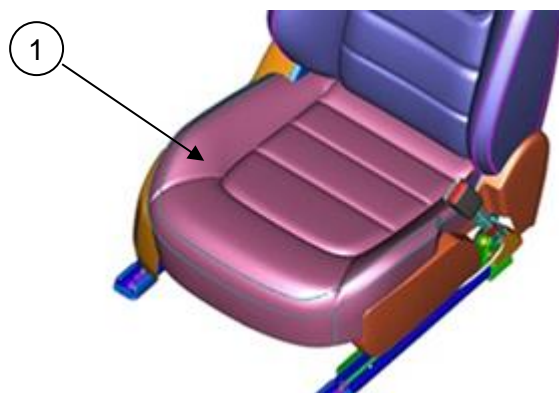
CX-5(KF) / (KE with VIN 600001~ for Russia)

Japan Built

Spec.	VIN Range		Production Date Range
Europe (L.H.D. & UK Specs.)	JMZ KF**** **	600052 - 712415	Feb. 14, 2017 - May 10, 2018
Russia	JMZ KE**** **		

REPAIR PROCEDURE

When you receive the customer complain on this concern, replace the front seat cushion trim(1) and the front seat cushion pad with a modified one according to the workshop manual "FRONT SEAT CUSHION TRIM REMOVAL/INSTALLATION".



PARTS INFORMATION

Part Number (NEW)	Description	Qty.	Remark
KF3C-88-111 02	TRIM-F/C,RH	1	For RHD, black
KF3E-88-111 39	TRIM-F/C,RH	1	For RHD, white
K157-88-11XD	F/C SUBASSY,RH	1	For RHD
KD1A-88-161 02	TRIM-F/C,LH	1	For LHD, black
KD1C-88-161 39	TRIM-F/C,LH	1	For LHD, white
KB8E-88-16XD	F/C SUBASSY,LH	1	For LHD
KD45-88-585	CLIP	2	

WARRANTY INFORMATION

Assembly group	S - Body		
Subassembly group	09 - SEATS & SEAT BELTS		
Symptom Code	87 (Warp)		
Damage Code	9B (Warped)		
Causal Part No.	****-88-111*/****-88-161* (Select the part number of front seat cushion trim applicable to the subject vehicle from "Parts Information" and enter it.)		
Quantity	1		
Operation No. and Labor Hours	<u>Operation No.</u>	<u>Labor Hrs.</u>	<u>Note</u>
	XXP7LARX	0.7	Without i-stop
	XXP7LBRX	0.8	With i-stop
	Includes: Front seat cushion trim and front seat cushion, R&R		
Period Covered	Normal Warranty Period		
Prior approval necessary	YES		

Kimiaki Inooka
Manager, Technical Information Group
Technical Service Department
Mazda Motor Corporation
1H40322441, 153-041(MC Internal Use)