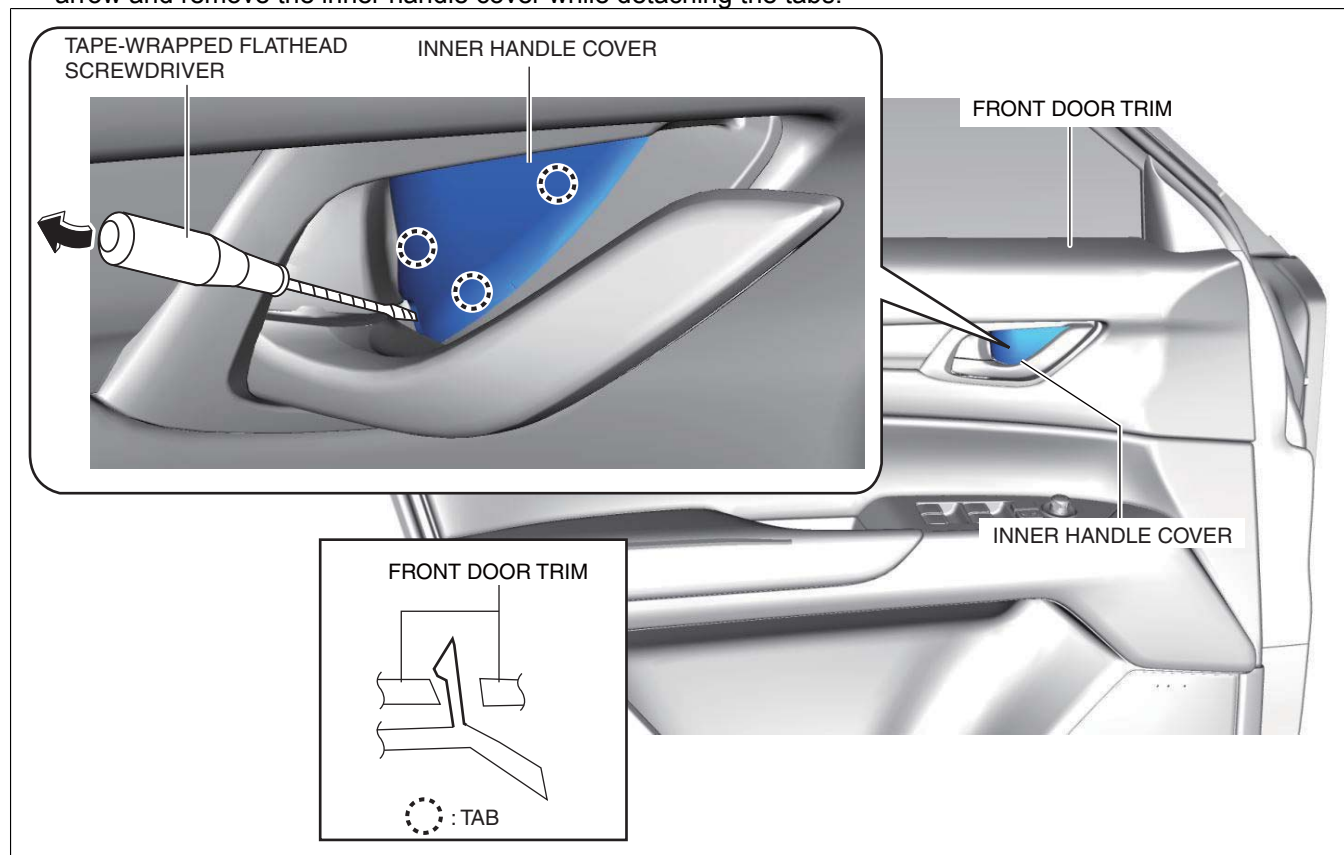


## FRONT DOOR TRIM REMOVAL/INSTALLATION

id091700802500

1. Disconnect the negative battery terminal. (See NEGATIVE BATTERY TERMINAL DISCONNECTION/ CONNECTION.)
2. Insert a tape-wrapped flathead screwdriver into the position shown in the figure, move it in the direction of the arrow and remove the inner handle cover while detaching the tabs.



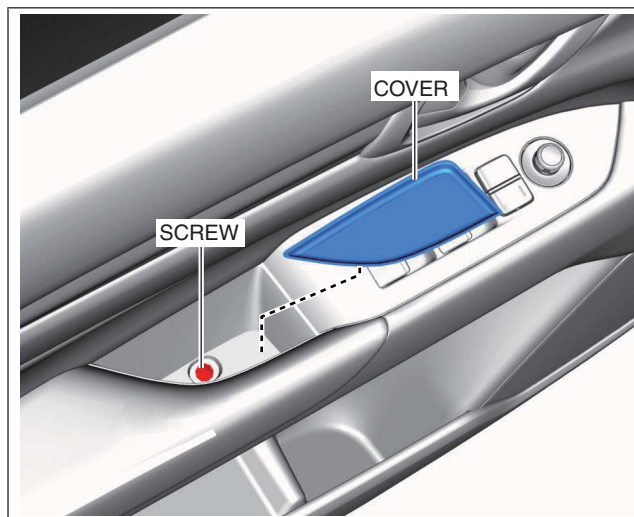
3. Remove the screw.

ac5uuw00007968



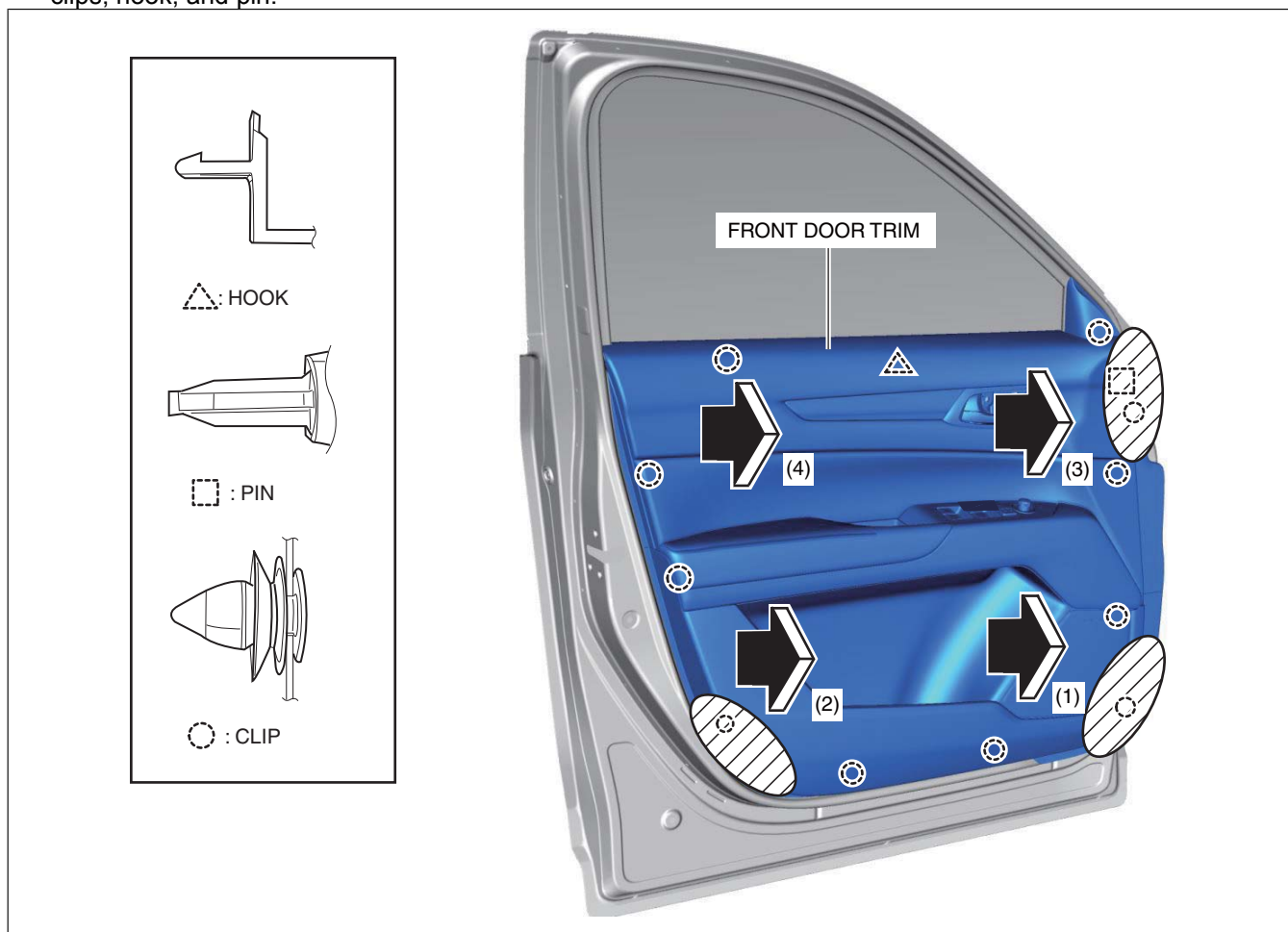
ac5uuw00006874

4. Remove the cover, then remove the screw.



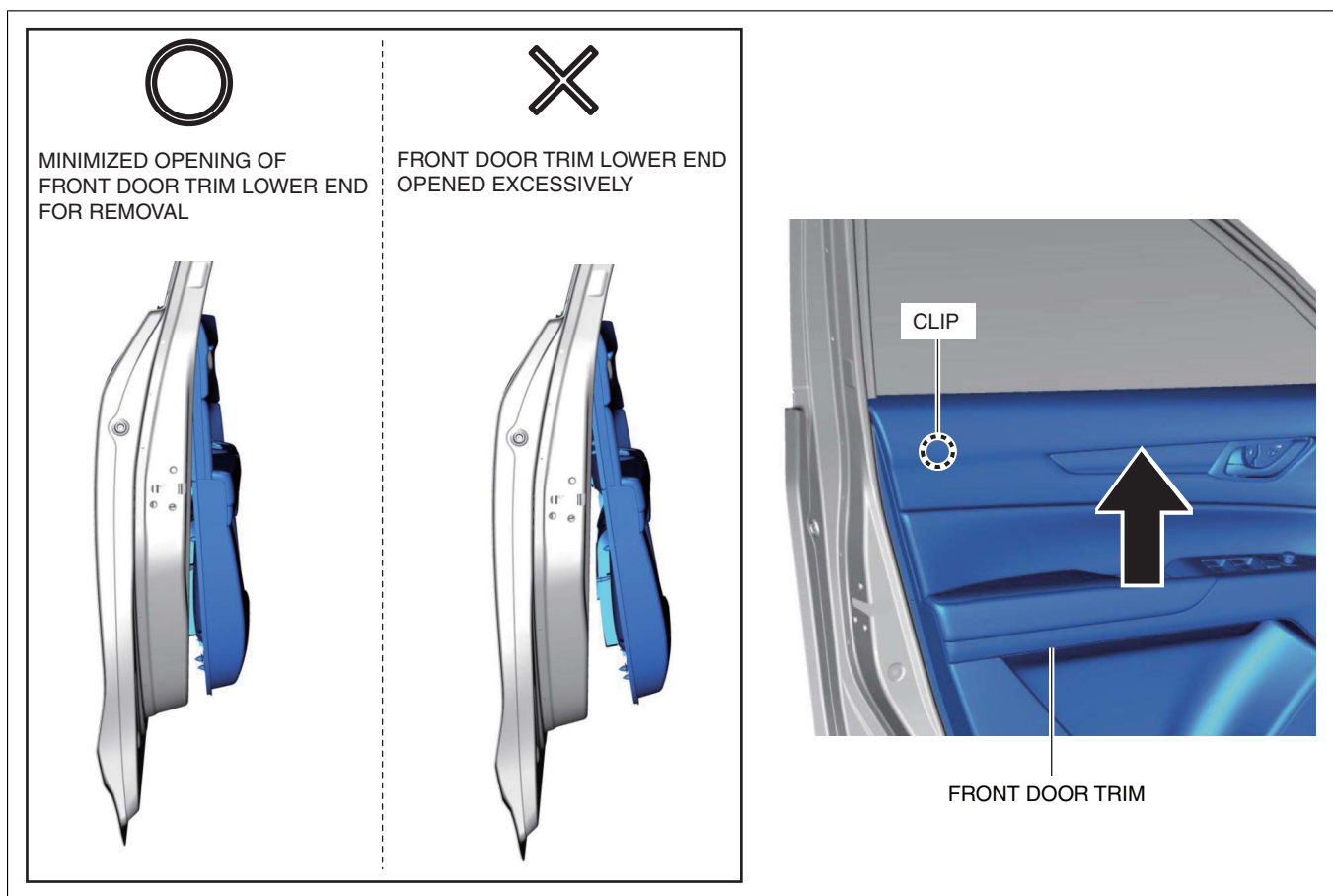
ac5uuw00006875

5. Hold each shaded area and pull the front door trim in the order of arrows (1), (2), (3), and (4), and detach the clips, hook, and pin.



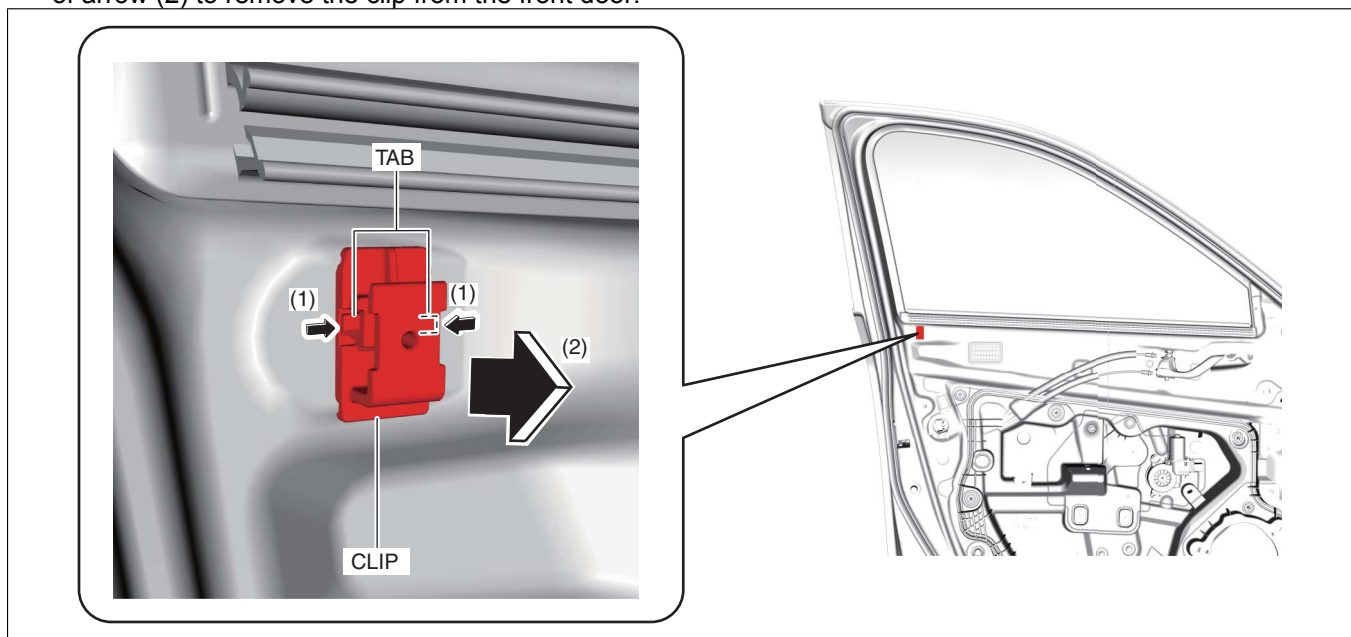
ac5uuw00007969

6. Lift up the front door trim in the direction of the arrow shown in the figure being careful not to open the lower end of the front door trim excessively, and remove the front door trim from the clip.



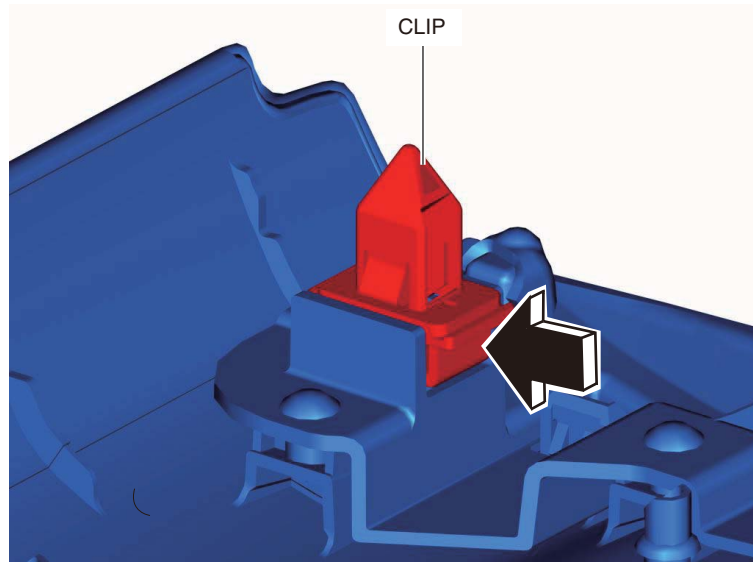
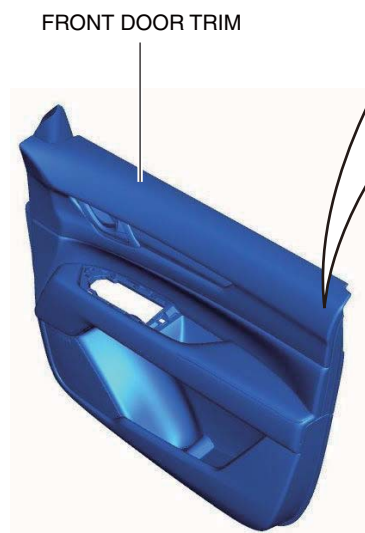
ac5uuw00007970

7. Disconnect the power outer mirror switch connector.
8. Disconnect the power window main switch connector (driver-side) or power window subswitch connector (passenger-side).
9. Remove the front door trim.
10. While pressing the tabs of the clip in the directions of arrows (1) shown in the figure, pull the clip in the direction of arrow (2) to remove the clip from the front door.



ac5uuw00007971

11. Install the clip removed in Step 10 to the front door trim.



12. Install in the reverse order of removal.

ac5uuw00007972